

## ONLINE PELLETS ANALYZER

# CEMTEC DIGITAL



## GENERAL CONTACT



### Address

Ennshafenstrasse 40 | A-4470 Enns



### Phone

+43 7223 83620



### E-mail

info@cemtec.at



### Home

www.cemtec.at

## CEMTEC DIGITAL CONTACT

### Address

Ennshafenstrasse 40 | A-4470 Enns

### Phone

+43 7223 83620-689

### E-mail

digital@cemtec.at

### Home

www.cemtec-digital.at

# THE CHALLENGE

---

## CEMTEC DIGITAL - COPA

During pelleting, the material fed is processed over a rotating plate with the addition of binding agents into granules, usually of a predetermined size.

In a subsequent classification process, pellets that exceed or fall below the predefined particle size range are sorted out and recycled in the process. This internal recycling of the oversize or undersize is expensive on the one hand and also leads to a reduction in throughput in the pelleting process on the other.

The resulting pellet size range depends not only on the chemical composition of the feed raw materials (raw material, water, binder) but also on the dwell time on the plate.

In order to optimize the efficiency of the pelleting process in the long term, a real-time analysis of the granulate produced is required in order to be able to respond flexibly and as quickly as possible to changes in the process conditions through targeted adjustment of the pelleting variables during operation.

As a manufacturing company, you are looking for a solution that allows you to both increase product quality and reduce production costs.

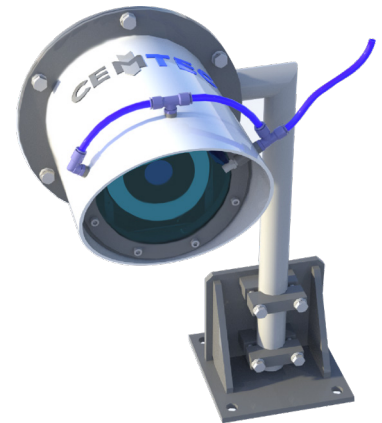
A qualitative recording of the pellet size distribution in real time is one of the prerequisites.

# THE SOLUTION

---

## The COPA System

- reduces production costs
- increases production output
- increases product quality
- enables a stable, regular and controlled product of the pelleting process
- passes on the grain size distribution to your system via an interface
- the data from COPA can be used for control purposes



interested in our pelletizing discs? Visit:

→ [cemtec.at/agglomeration](https://cemtec.at/agglomeration)



# APPLICATION

---

## COPA - AREAS OF USE

- the COPA system is designed to monitor pellet size distribution on pelletizing discs
- the COPA system continuously provides information on the current size distribution
- the information can be used to **control the system** and to **control the quality** of the pellets
- the system records the grain size distribution in **real time**

## THE PRODUCT

---

### COPA - SPECIFICATIONS - CAMERA

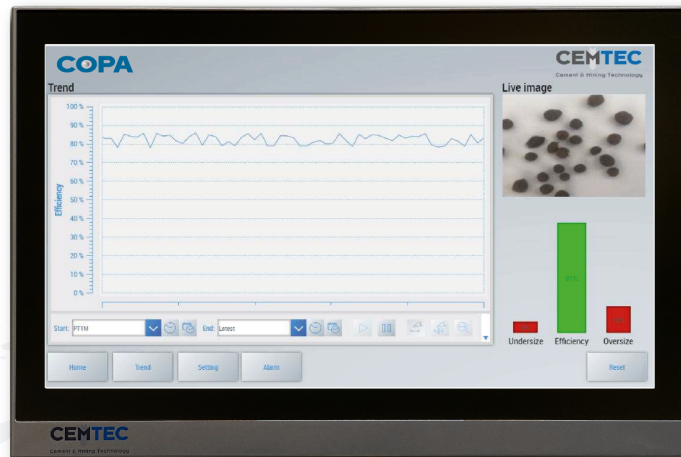
- high resolution camera with 22 fps
- lighting and flashing equipment with energy saving power LEDs



- continuous lens flushing ensures high reliability

## CCOPA - SPECIFICATIONS - CONTROL

- CEMTEC-control
- CEMTEC application software with user-friendly interface



- independent electrical and pneumatic control cabinet with protection class IP66
- very small footprint 600x600x350 mm
- individual connection to the customer control system (Industrial Ethernet, Profibus/-net, OPC UA, etc.)
- 15.6" Multitouchpanel
- Industrial PC

